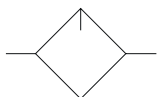




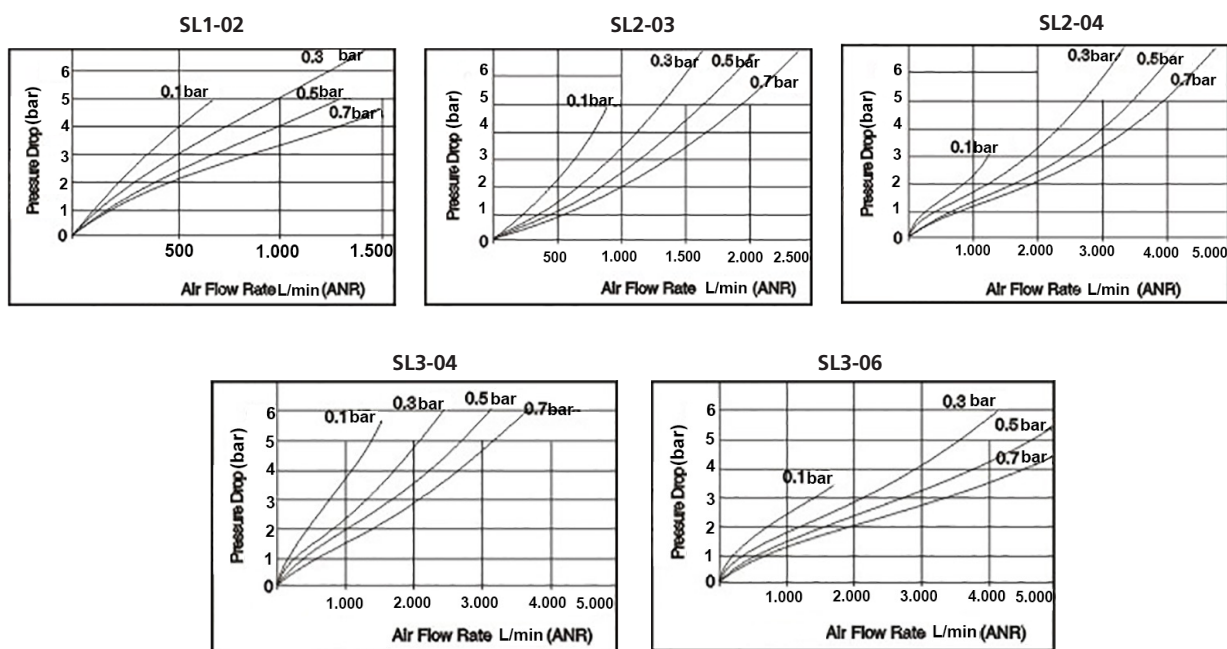
Symbol



Product feature

1. The structure of oil dripping adopts gap seal type, which makes the adjustment of oil supply more reliable;
2. Adjustable ring for oil supply can only revolve for one circle. The quantity of oil supply basically takes on linear distribution.
3. Special drip nozzle structure will produce negative pressure in oil dripping outlet and the mist flow is minimal;
4. It is available to add oil under pressure, and the oil bowl is large;

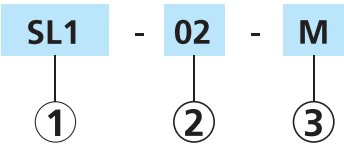
Pressure and feature of flow



Specification

Model	SL1-02	SL2-03	SL2-04	SL3-04	SL3-06
Fluid	Air				
Port size	1/4"	3/8"	1/2"	1/2"	3/4"
Pressure range	0.5 ~ 9 bar(7~130Psi)				
Proof pressure	15 bar(215 Psi)				
Temperature range	-20~70°C				
Capacity of oil bowl	20 ml	85 ml		170 ml	
Recommended lubricant	ISO VG 32 or equivalent				

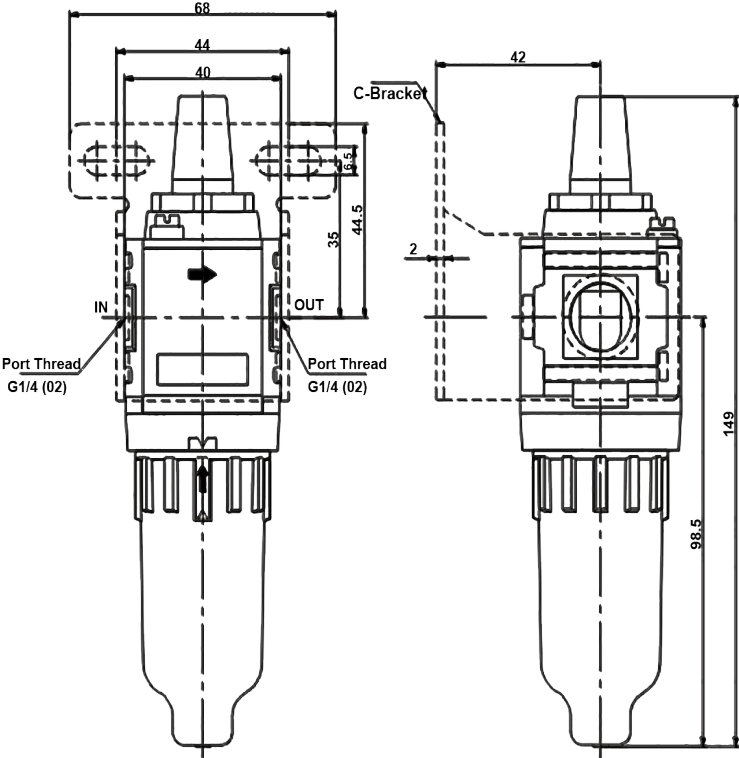
Ordering code



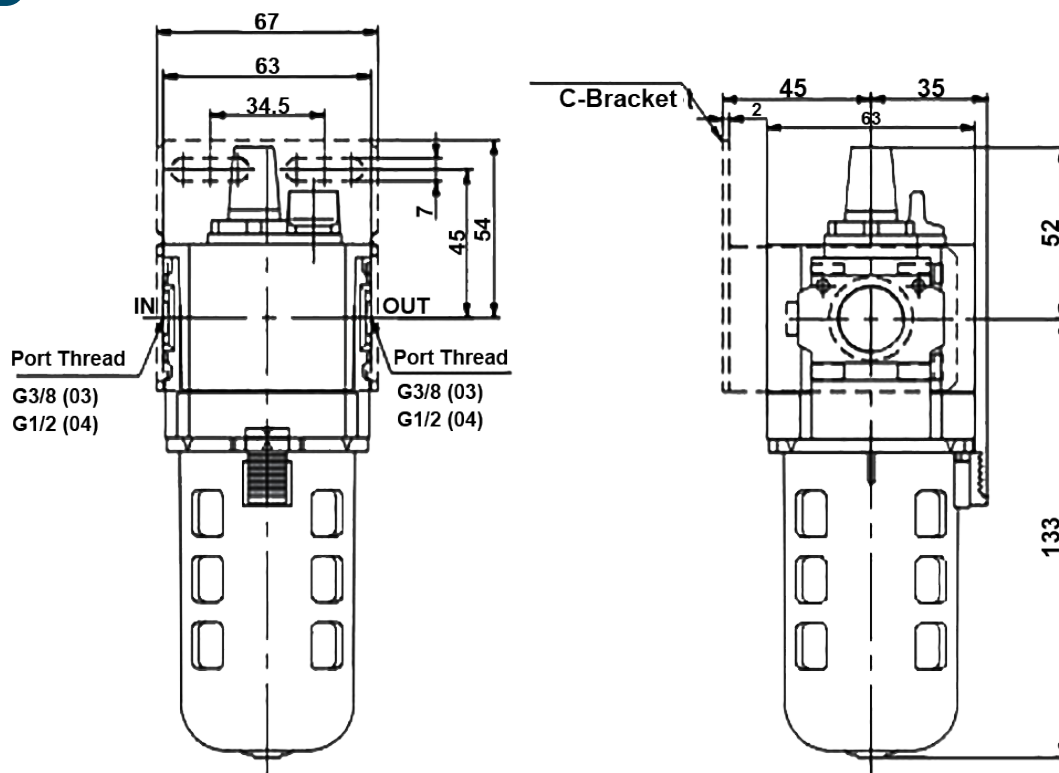
①	Model	-	②	Port Size	-	③	Drain type
	SL1: L unit			02: 1/4"			Blank: No drain
	SL2: L unit			03: 3/8"			M: Manual drain
				04: 1/2"			
				04: 1/2"			
	SL3: L unit			06: 3/4"			

Dimensions

SL1



SL2



SL3

